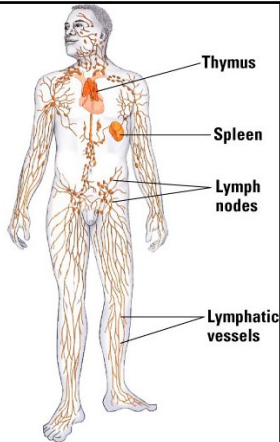
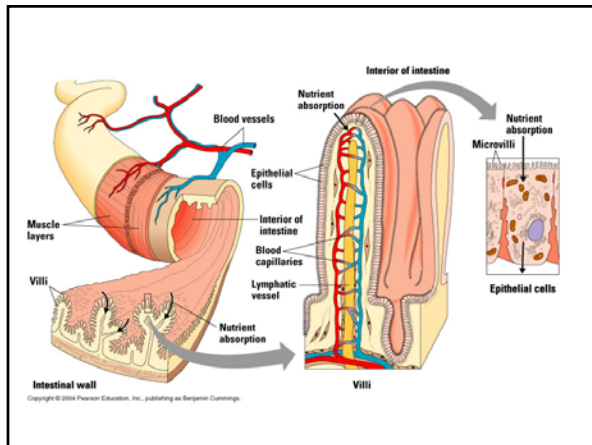


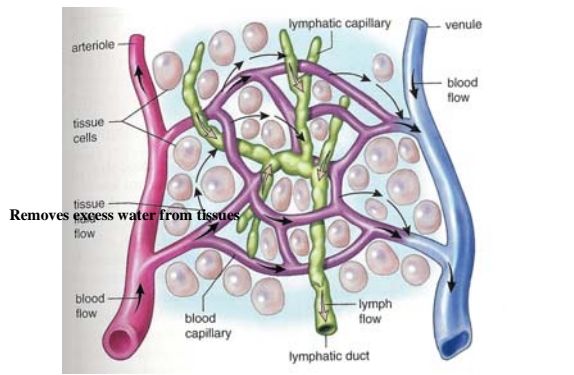
LYMPHATIC SYSTEM

- REMOVES EXCESS FLUID FROM TISSUES
- CARRIES IMMUNE SYSTEM MOLECULES
- DESTROYS PATHOGENS
- ABSORBS FATS

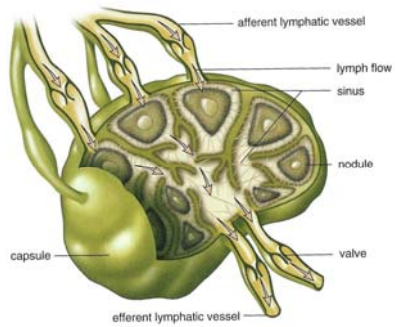




Lymphatic Capillaries

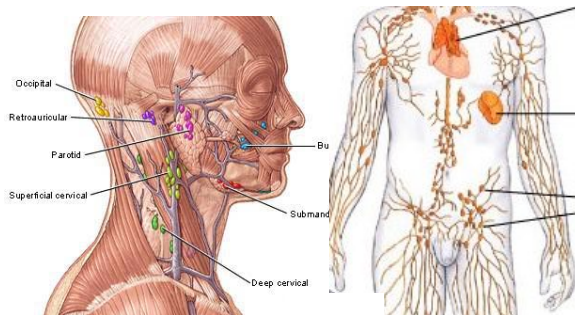


Lymph Nodes

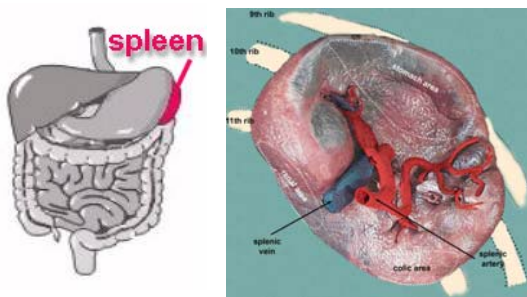


Macrophages inside nodes engulf pathogens

Lymph Nodes



Spleen



SPLEEN- MACROPHAGES ENGULF RED BLOOD CELLS

Splenic Circulation

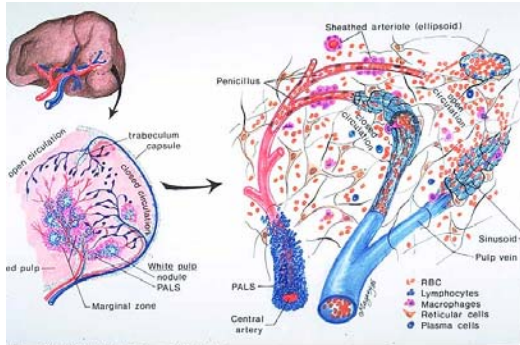
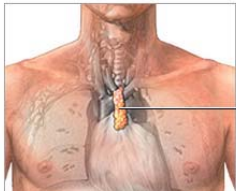


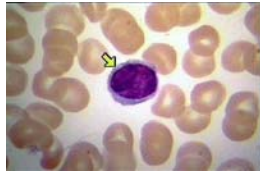
Figure 18. Histological structure of the spleen.

Thymus

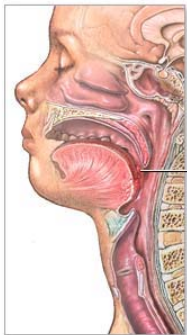


Thymus

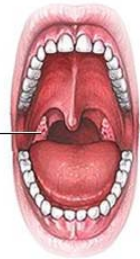
T- LYMPHOCYTES
HORMONES



Tonsils



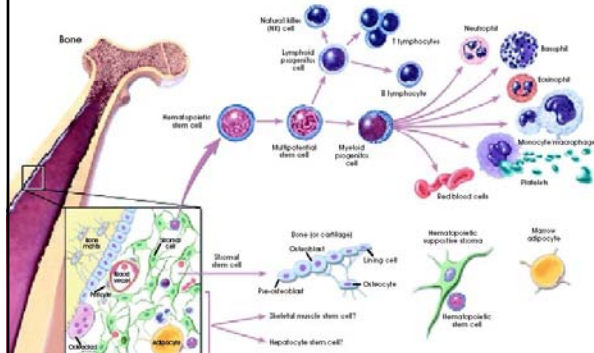
Tonsil



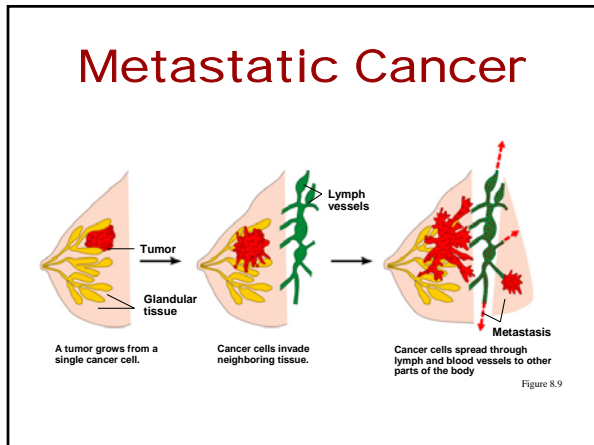
ADAM.

RED BONE MARROW- ORIGIN OF MANY IMMUNE SYSTEM CELLS (WBC'S)

Red Bone Marrow



Metastatic Cancer



Cancer Treatments



Chemotherapy uses drugs that disrupt cell division



Radiation therapy disrupts cell division
