

A&P Lab Quiz #8

1. Which of the following is NOT a type of hormone?

a. amino acid derivatives

b. proteins

c. steroids

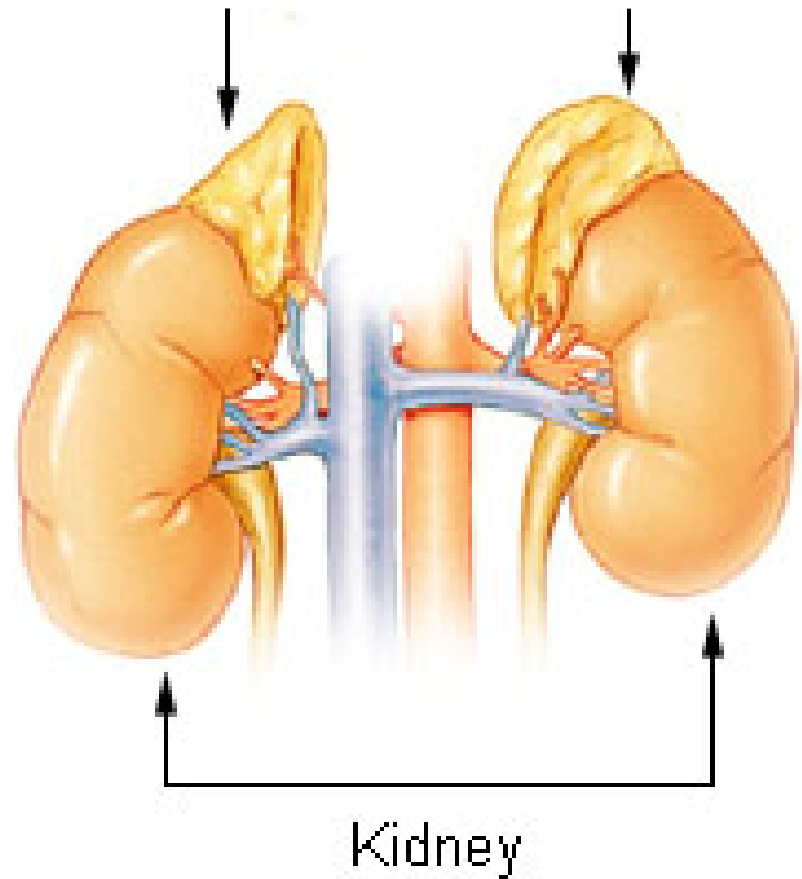
d. carbohydrate derivatives

e. eicosonods

What endocrine structures?

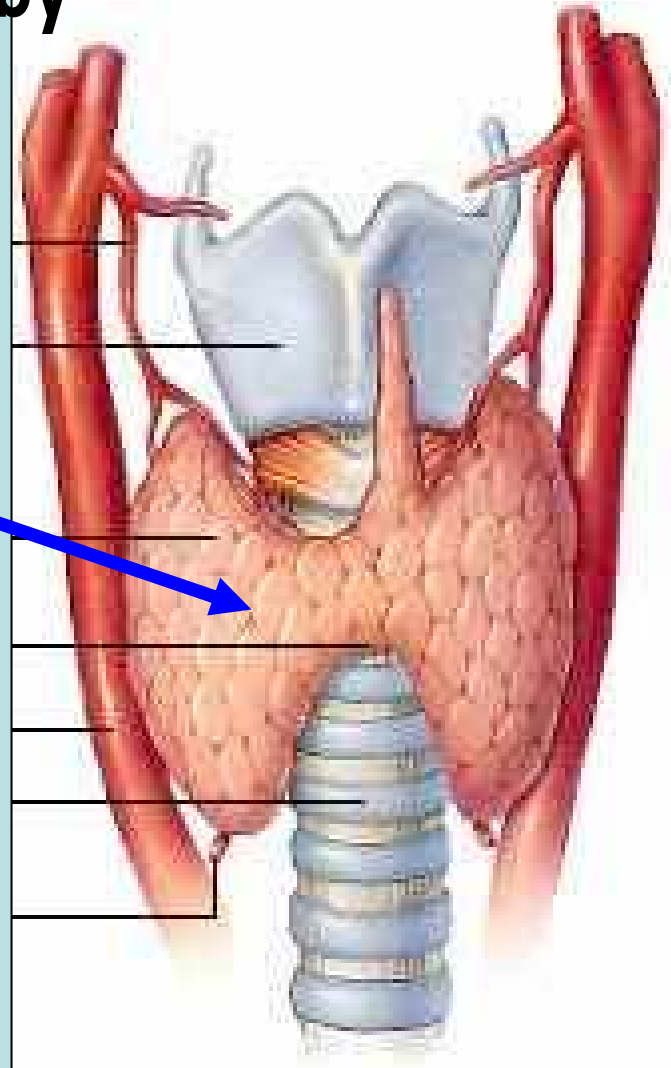
- a. thymus glands
- b. pituitary glands
- c. adrenal glands**
- d. lymph glands
- e. thyroid glands

2.

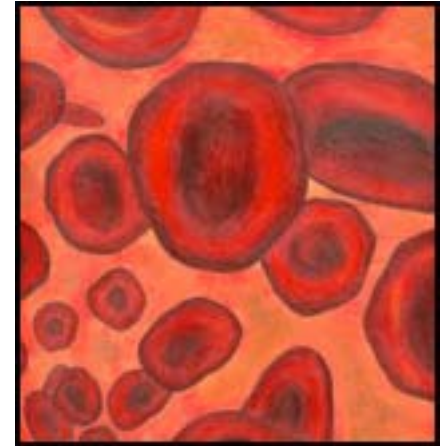


3. Which hormone is produced by this gland?

- a. Adrenalin
- b. Oxytocin
- c. Growth Hormone (GH)
- d. Thyroxine (T3-T4)
- e. Anti-diuretic Hormone ADH



True or False



4. RBC's have nuclei, but no other organelles *FALSE*
5. RBC's live in the body for about 12 days *FALSE*
6. The most abundant cells in blood are RBC's *TRUE*

What is it?

- a. RBC
- b. Granulocyte
- c. Agranulocyte
- d. Nucleus
- e. Platelet

