



HOMEOSTASIS

THREE COMPONENTS:
-SENSOR
-REGULATOR
-EFFECTOR

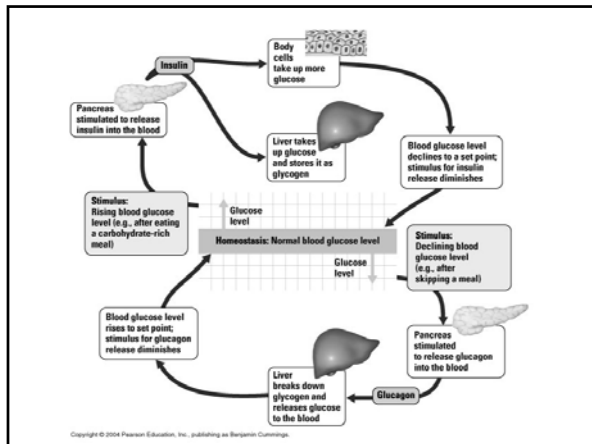
TWO TYPES OF MECHANISMS:
-NEGATIVE FEEDBACK
-POSITIVE FEEDBACK

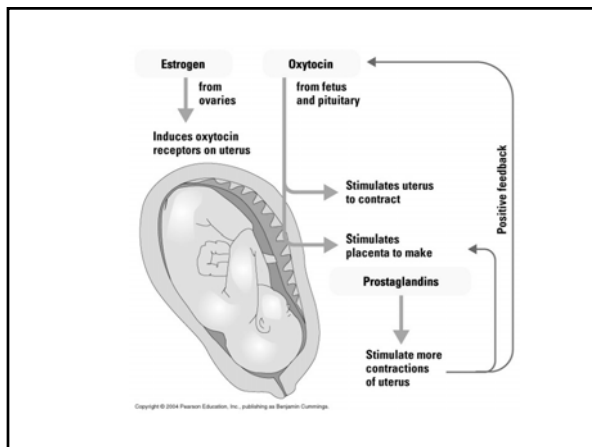


**HYPO=LESS THAN
HYPER=MORE THAN
THERMIA=TEMPERATURE**

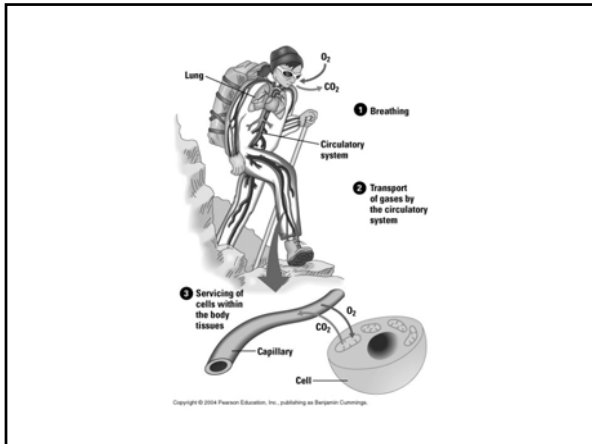


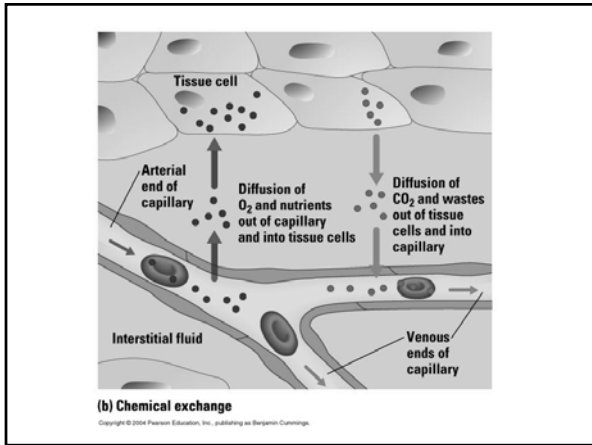
Copyright © 2004 Pearson Education, Inc., publishing as Benjamin Cummings.

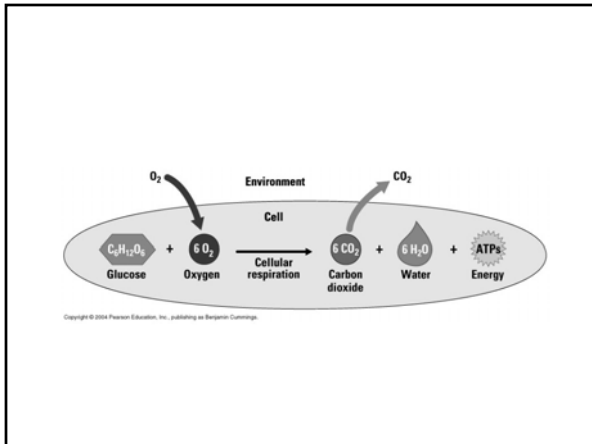




Homeostasis & Cellular Respiration







Glycolysis

Glyco=sugar/sweet

lysis=break apart

REVIEW:

1. WHY COULD AN OVERDOSE OF INSULIN CAUSE A COMA?
2. DESCRIBE THE MAIN PLAYERS IN THE REGULATION OF BODY TEMPERATURE.
3. HOW DO YOU THINK LABOR IS INDUCED?
