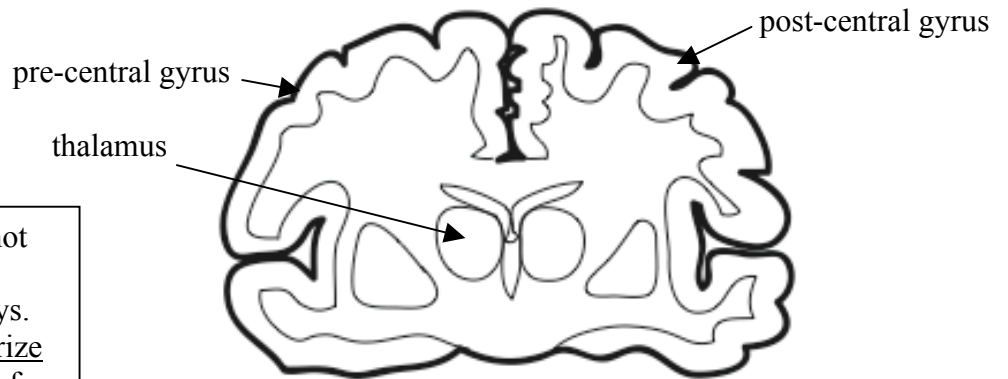


Homework / Misc. Assignment

I want to encourage you to answer ALL of the review questions found at the end of each lab chapter. To do so will be to your own benefit. However, for this assignment I only want to see answers to three of the questions (questions 11, 12 and 13) from page 16 of lab 8 (Nervous System).

#11 Use the diagram below to illustrate the general course of **somatic sensory pathways** (question #11).



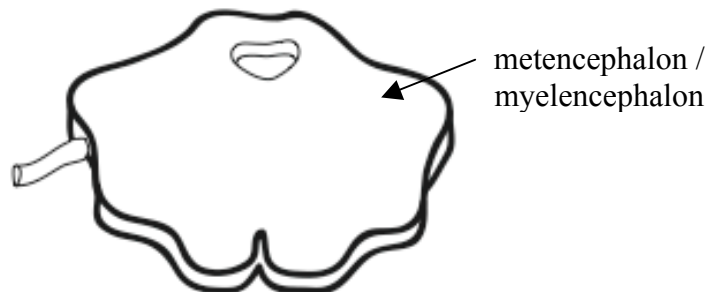
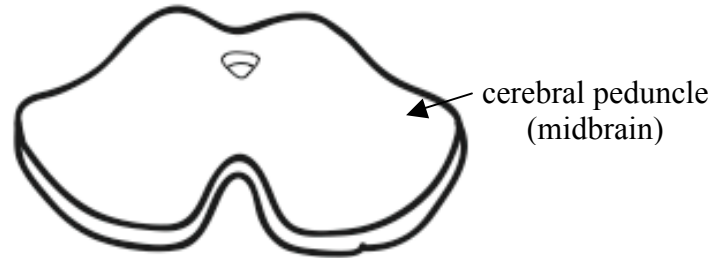
Important Note: You do not need to illustrate any specifically named pathways. Instead you should summarize the general characteristics of sensory, somatic motor or autonomic pathways.

Hints: (see chpts. 16 & 17 in the text)

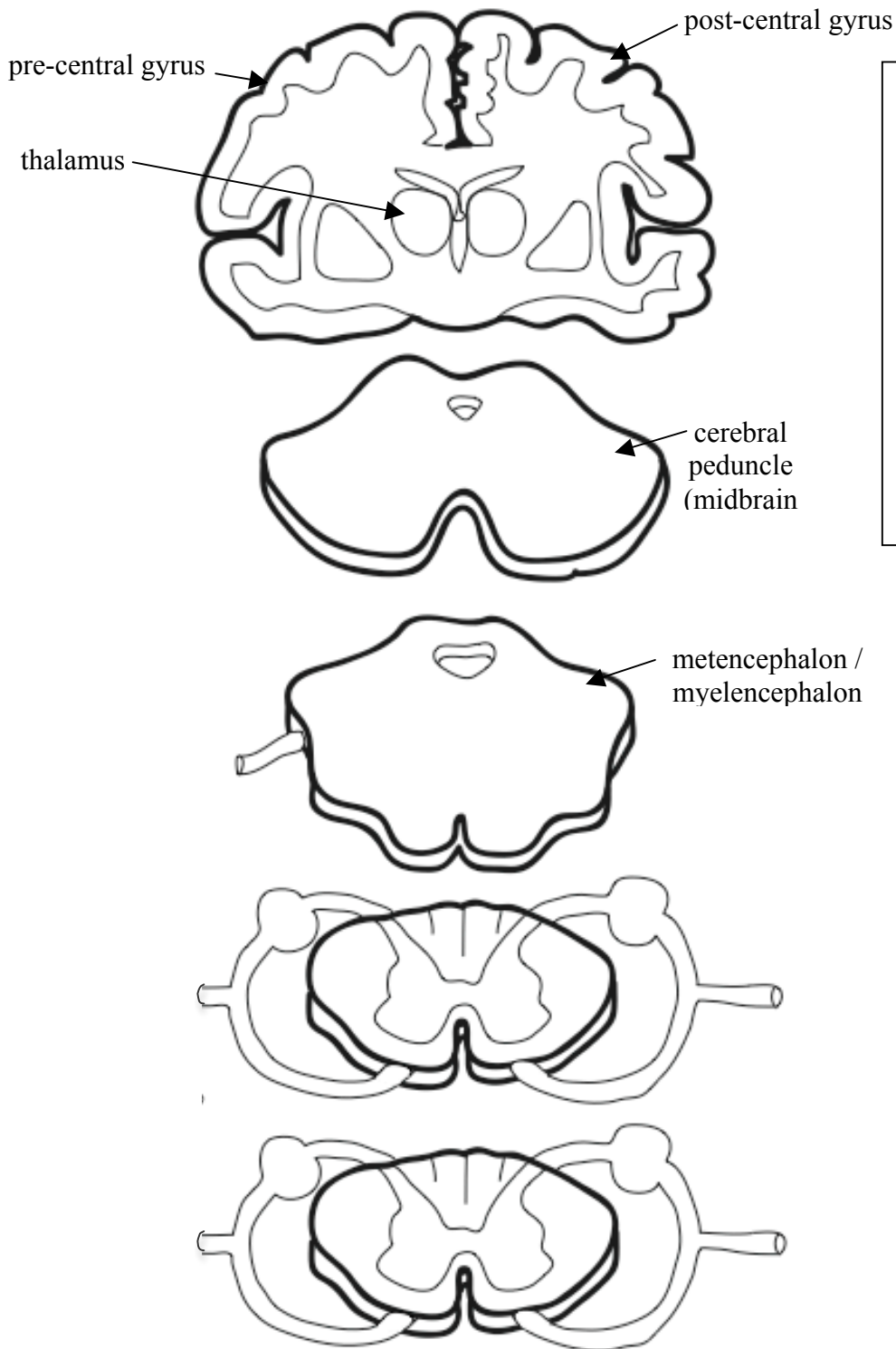
#11 – see figs. 16.2abc

#12 – see figs. 16.3a & 16.4a

#13 – see figs. 16.3b, 17.3,
17.4 & 17.8



#12 Use the diagram below to illustrate the general course of **somatic motor pathways** (question #12).



Important Note: You do not need to illustrate any specifically named pathways. Instead you should summarize the general characteristics of sensory, somatic motor or autonomic pathways.

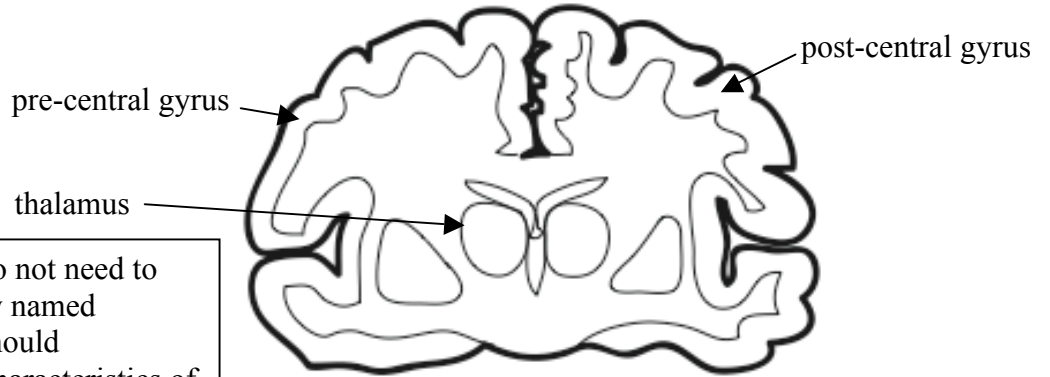
Hints: (see chpts. 16 & 17 in the text)

#11 – see figs. 16.2abc

#12 – see figs. 16.3a & 16.4a

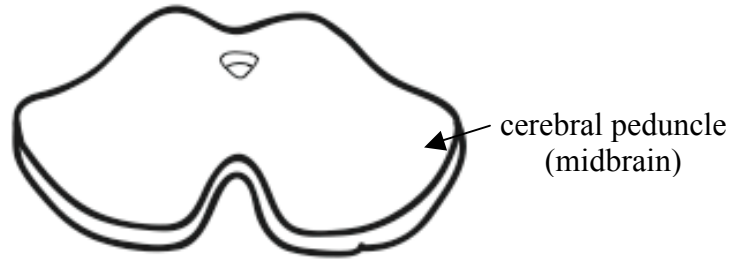
#13 – see figs. 16.3b, 17.3, 17.4 & 17.8

#13 Use the diagram below to illustrate the general course of **autonomic pathways** (question#13).

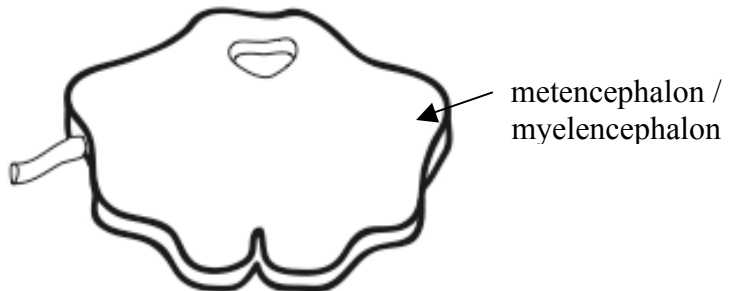


Important Note: You do not need to illustrate any specifically named pathways. Instead you should summarize the general characteristics of sensory, somatic motor or autonomic pathways.

Hints: (see chpts. 16 & 17 in the text)
 #11 – see figs. 16.2abc
 #12 – see figs. 16.3a & 16.4a
 #13 – see figs. 16.3b, 17.3, 17.4 & 17.8



PANS



SANS

