

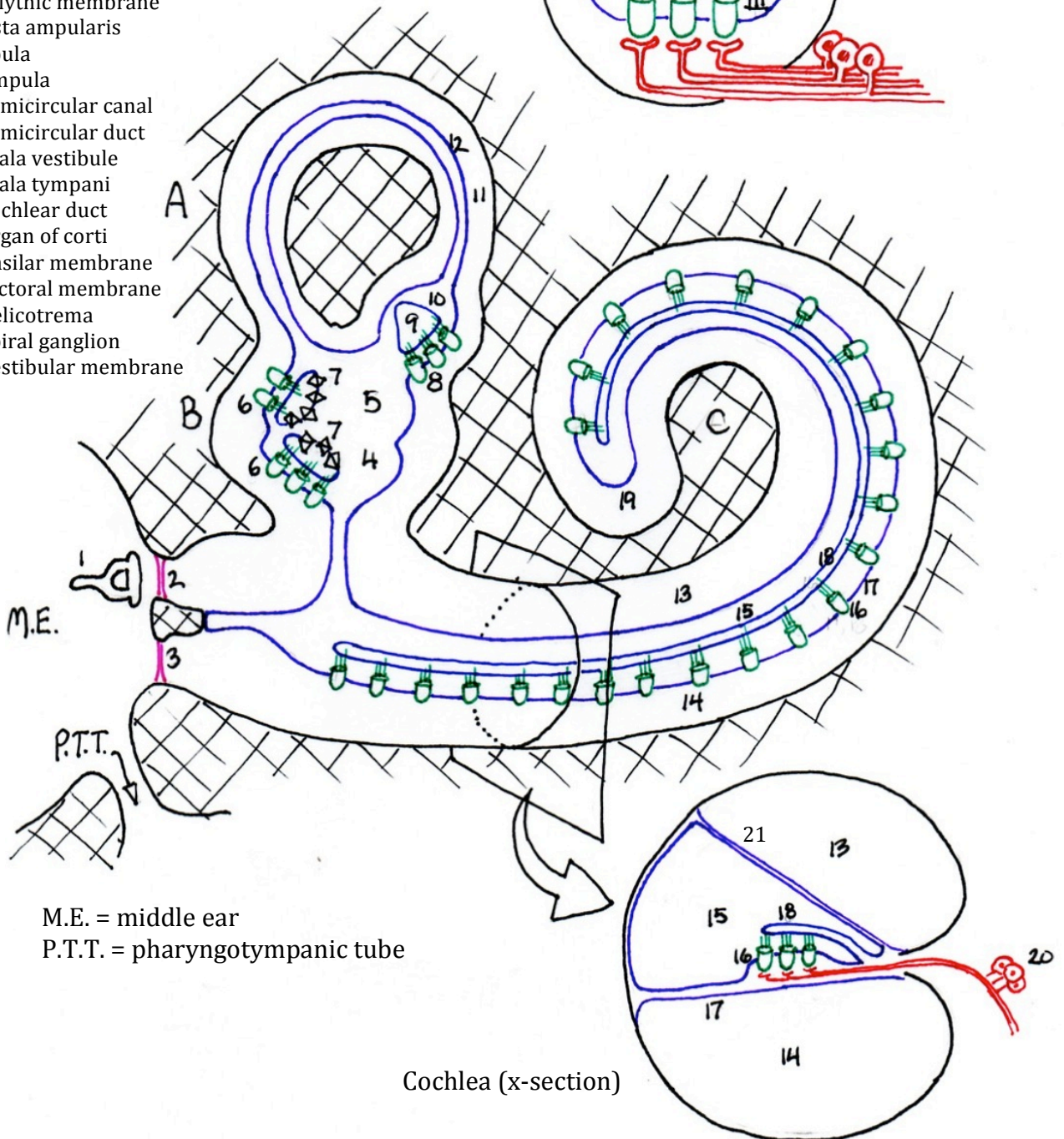
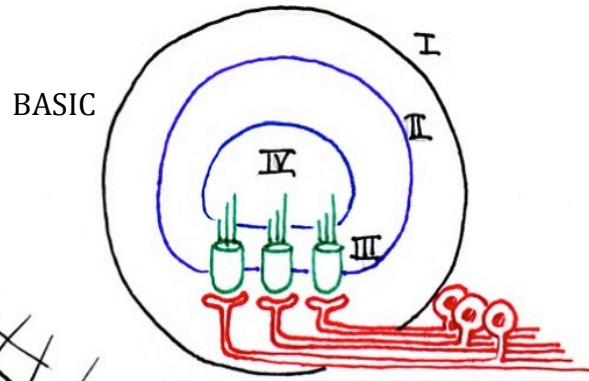
BASIC

- I. Bony Labyrinth (filled with perilymph)
- II. Membranous Labyrinth (filled with endolymph)
- III. Receptor Epithelium (hair cells)
- IV. Overlying Gel Mass

INNER EAR STRUCTURE

- A. Semicircular Canals (of vestibular apparatus)
- B. Vestibule (of vestibular apparatus)
- C. Cochlea

- 1. stapes
- 2. oval window
- 3. round window
- 4. utricle
- 5. saccule
- 6. macula (in utricle and saccule)
- 7. otolithic membrane
- 8. crista ampularis
- 9. cupula
- 10. ampula
- 11. semicircular canal
- 12. semicircular duct
- 13. scala vestibule
- 14. scala tympani
- 15. cochlear duct
- 16. organ of corti
- 17. basilar membrane
- 18. tectorial membrane
- 19. helicotrema
- 20. spiral ganglion
- 21. vestibular membrane



M.E. = middle ear
 P.T.T. = pharyngotympanic tube

Cochlea (x-section)